



## PRESS RELEASE

16.03. – 02.06.2024

BÄRBEL LANGE

Doppellinien

PRESS TOUR:

Thu, March 14, 2024

11 am

OPENING:

Fri, March 15, 2024

7 pm



Bärbel Lange, *Schlangentor*, 2024. Photo: Robert Kunstmann  
©KUNSTHAUS KAT18



“THE DOUBLE LINE MEANS THE INNER LIFE. THE SOUL. THAT THEY ARE ALSO WARMED. THE OUTSIDE IS THE FUR. THE THICK FUR. THAT ALSO PROTECTS.”

Bärbel Lange creates artworks that are largely independent of current art discourses and impressive in their uniqueness. Depictions of animals play a central role in her practice: With clear lines and a two-dimensional painting style, she creates creatures full of character that spread out on paper and cardboard, furniture and meter-long lengths of non-woven fabric.

The "protective animals", as Bärbel Lange calls them, create a protective space - a so-called "safe space". The double line shows not only the contours, not only the skin and fur of the animals, but also their inner life and soul. The cosmos inhabited by the creatures she has created is a place of cohesion and cooperation. A place where both the artist and the audience can feel at ease.

Animals with their offspring are a recurring motif in the artist's works, telling her very own story of creation. On paper, cardboard and furniture, materials that we encounter in everyday life, the most diverse animals cavort with their offspring. Characteristic features of Bärbel Lange's work are also the meter-long strips of fleece on which the animal motifs are lined up one behind the other.

In 2015, the artist discovered a roll of dark gray non-woven fabric by chance in a garbage container and took it into her studio. The stubborn material with its rough, irregular surface opens up a new perspective on the medium of painting.

With *Doppellinien*, the Kunstverein Braunschweig is showing the artist's first major institutional solo exhibition. Bärbel Lange is collaborating with raumlaborberlin for the exhibition.



Bärbel Lange (on the left) with Jan Liesegang of raumlaborberlin, 2017  
Photo: Britt Schilling ©KUBiST-KOELN

## SHORT BIOGRAPHY

Bärbel Lange is an artist in the studio of the Kunsthaus KAT18 since 2014 and a member of X-SÜD in Cologne. Together with raumlaborberlin, she is involved in the planning and realization of the Inclusive Kunsthaus Kalk. Her works have been shown at Kolumba, Cologne (2022), Ausstellungshaus Spierri, Hadersdorf (2021), the Royal Academy, London (2021) and the Temporary Gallery, Cologne (2019), among others.

Please note:

When reporting on the *Doppelinien* exhibition by Bärbel Lange, we take great care not to use any discriminatory attributions. At the artist's request, terms such as "outsider art" or "artist with a disability" should be expressly avoided. The focus of the exhibition is on the work of Bärbel Lange. We ask that this focus be maintained in the reporting.



Firat Tagal, 2020 ©kaethe:k

## SPECIAL GUEST

Since 2015, artists have been inviting guests to complement or comment on the exhibition. We are delighted that Bärbel Lange has chosen the artist FIRAT TAGAL (\*1997, lives and works in Pulheim near Cologne), whose large-format paintings deal with themes of pop culture and architecture.

Firat Tagal's paintings are characterized in particular by a complete freedom from fear and naturalness as well as by his bold painting style and radical reduction. Since 2020, he has been an artist at kaethe:k Kunsthaus, an art center for aspiring artists with disabilities in Pulheim near Cologne. Since 2020, fourteen artists have had a studio space here in the fields of painting, sculpture, graphic art, new and interdisciplinary media. The Kunsthaus creates the conditions for artistic work and access to cultural and educational institutions that are necessary for the self-determined professionalization of artists with disabilities.



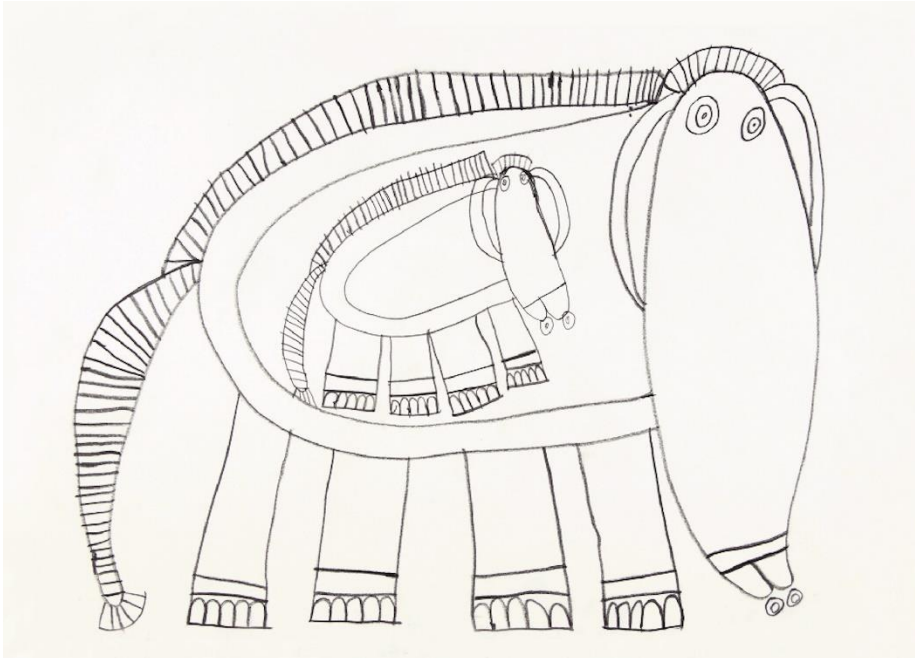
PREVIEW



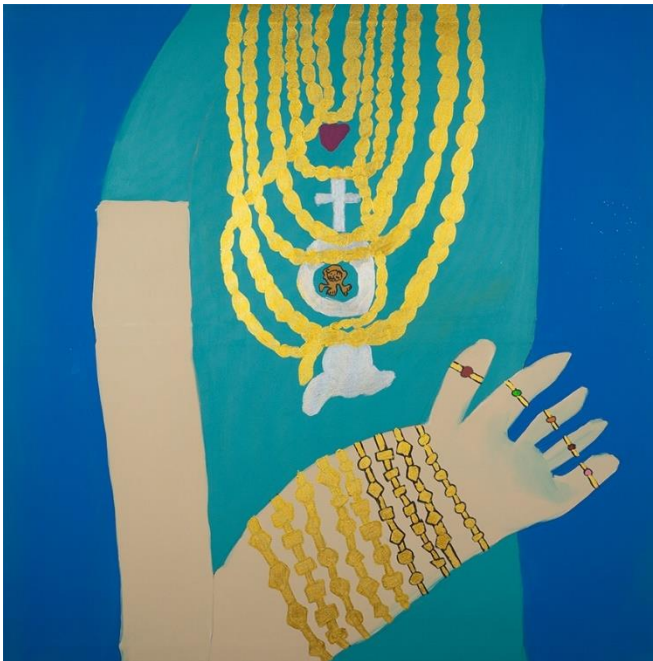
Bärbel Lange, *BÄR CUTOUT*, 2019 Photo: Enno Jaekel  
©Kunsthhaus KAT18



Bärbel Lange, *TEPPICH*, o.A., Photo: Enno Jaekel ©Kunsthhaus KAT18



Bärbel Lange, *SCHWANGERE ELEFANTENKUH*, 2017, Photo: Enno Jaekel  
©KUBiST-KOELN



Firat Tagal, *o. T.*, 2023 © kaethe:k



## PROGRAM

Public Guided Tour  
Thursdays 6 pm and  
Sundays 3 pm  
Only during the exhibition period  
Free of charge, plus admission

Fri, March 15, 2024, 19 Uhr  
Opening  
BÄRBEL LANGE Doppellinien  
Free of charge

Thu, 28.03.2024, 6 pm  
Tandem tour  
Art mediators from Kunstverein Braunschweig and artists from Atelier  
Geyso20 guide you through the exhibition together  
Free of charge, plus admission

Thu, 25.04.2024, 6 pm  
Tandem tour  
Art mediators from Kunstverein Braunschweig and artists from Atelier  
Geyso20 guide you through the exhibition together  
Free of charge, plus admission

You can find the entire program for the exhibitions on our [website](#).



## TANDEM TOURS

The Kunstverein Braunschweig is delighted to once again be cooperating with Geyso20 as part of BÄRBEL LANGE's exhibition, thus continuing their long-standing friendly collaboration. On two dates, a member of the Kunstverein's mediation team and an artist from the Geyso20 studio will guide visitors through the Villa Salve Hospes and the Remise and talk with them about the works in the exhibition and their own artistic work.

Geyso20 comprises a studio, a gallery and a collection of outsider art. In the studio, artists with disabilities find the space and framework for their artistic practice.

## AVAILABLE OFFERS

Guided tours and workshops for groups and school classes. The current mediation program, conditions and information can also be found on our [website](#).

## REGISTRATION AND INFORMATION ON ALL OFFERS

T 0531 49556 or [vermittlung@kunstvereinbraunschweig.de](mailto:vermittlung@kunstvereinbraunschweig.de)





**Exhibition views will be available in the press section of our [website](#) from March 20.**

### **Press and Public Relations**

Jana Mareike Lehnert

T +49 (0) 531 49556

[presse@kunstvereinbraunschweig.de](mailto:presse@kunstvereinbraunschweig.de)

Kunstverein Braunschweig  
Lessingplatz 12  
38100 Braunschweig  
[kunstvereinbraunschweig.de](http://kunstvereinbraunschweig.de)

Opening hours:

Di – Fr 12 – 18 Uhr

Do 12 – 20 Uhr

Sa, So 11 – 18 Uhr

*Doppellinien* is supported by:



Stiftung  
Braunschweiger  
Kulturbesitz



**Niedersächsisches Ministerium  
für Wissenschaft und Kultur**



Stadt

**Braunschweig**

Fachbereich Kultur und Wissenschaft